

# BOURBON STREET

## INSTALLATION & MAINTENANCE INSTRUCTIONS | LAMINATE

**PLEASE READ ALL INSTRUCTIONS CAREFULLY, BEFORE YOU BEGIN INSTALLATION.  
IMPROPER INSTALLATION WILL VOID WARRANTY.**

### **BEFORE INSTALLATION**

Store the packages of laminate in the room or rooms to be covered for at least 72 hours at normal room temperature before installation. Wait for any completion of wall preparation, painting, and other wet trades before storage begins. Do not open the packages but spread them out in the room or rooms. If the installation area is new construction, wait for 14 days with the climate controlled at normal room temperature with a minimum of 62°F. This allows for acclimation of the temperature and humidity conditions.

Check the sub floor for a smooth surface and fill in any depressions or holes with a floor level compound. Long rooms in excess of 15' in either direction should be checked for any uneven conditions in the subfloor and level compound should be applied to within a difference from one end to the other of a gradual minimum of 1/8" within a 10' radius.

Always shuffle the planks from various packages to ensure mixture of grain and color. Do not install the planks on stairs.

You will need to install a T-mold to allow for expansion after a run of 40' in width and 40' in length. Use transition strips in non-square adjoining areas.

### **CHECK THE PLANKS BEFORE INSTALLING THEM TO BE SURE OF APPEARANCE.**

We maintain strict quality control at the factory but it is a good idea to check each plank for any blemishes or flaws. Return any such planks to your retailer for replacement.

### **BASIC INSTALLATION**

**\*\*Note: Bourbon Street has an attached cushion. No additional foam or underlayment is recommended.\*\***

*Figure 1:* Thoroughly clean the subfloor. If installing over concrete or a crawl space that is less than 24" from the subfloor a moisture barrier is required (that is at least 6mil).

*Figure 2:* Commence installation in the right hand corner of the room with tongue facing the wall. Use shims to allow about 1/4" between the planks and the walls, or stationary interior room objects, so that there is room for normal expansion and movement.

*Figure 3:* Insert the end section of the next plank and drop down to get a flat adjoining surface. Continue this process to the end of the first row.

*Figure 4:* Measure out the last boards to fit. Allow for the 1/4" expansion space next to the wall and draw the cut line.

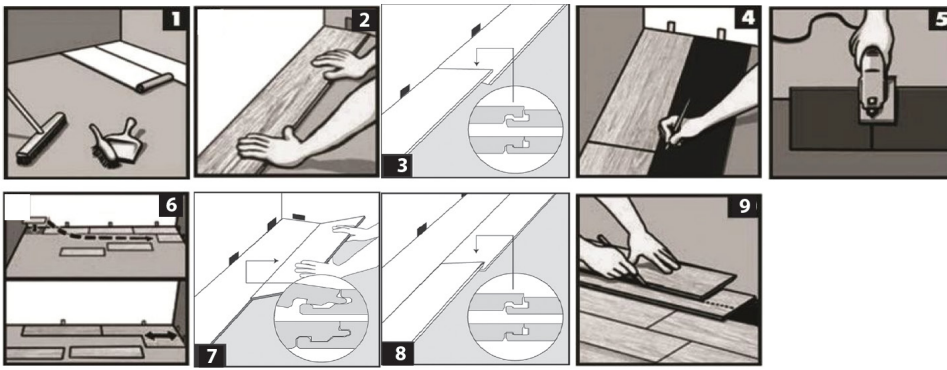
*Figure 5:* If you are using a sabre saw, or other type of power saw, place the plank face down on the work area and cut to size. If you are cutting with a hand saw, use a fine tooth blade and cut the plank with the face up. Insert the cut plank into the row and use a pry bar to ease the plank into position.

*Figure 6:* The cut piece from the previous row should be used to start the next row. This cut piece should be at least 12" long. If the cut piece is less than 12", start with a full plank which should be cut in half length-wise in order to achieve the staggered appearance. Be sure that all end joints are staggered in length at least 12".

*Figure 7:* Insert the starting piece of plank on the next row and drop down to secure.

*Figure 8:* Insert the next plank by angling the length of the plank into the groove of the previous row, and drop into place. Continue this on the remaining planks in the row. At the end of the row repeat steps 4, 5 and 6.

*Figure 9:* To install the last row of the project, place a loose plank on top of the last installed plank on the adjoining row. Place another plank on top, with the tongue side facing the wall (allow the 1/4" expansion joint) and draw a line along the edge of the plank as indicated and cut along the drawn line. Insert the cut plank against the wall and use a pry bar to ease into position. The shims can then be removed.



### **SUBFLOORS WITH RADIANT HEAT**

**IMPORTANT:** Due to the speed of sudden temperature changes, which has the potential to negatively affect laminate flooring construction, it is not recommended to install over any electrical radiant heating system. Installation over electrical radiant heating systems will not be covered by the manufacturer’s warranty. Below are instructions for hydronic radiant heating systems using water.

Ensure the hydronic radiant heat surface temperature never exceeds 85°F. Before installing over newly constructed radiant heat systems, operate the system at maximum capacity to force any residual moisture from the cementitious topping of the radiant heat system.

Then set the thermostat to a comfortable room temperature for the installation. It is recommended that the radiant heat is applied in a gradual manner after installing the laminate flooring. Refer to the radiant heat system’s manufacturer recommendations for additional guidance.

It is up to the owner/installer to confirm the suitability of any radiant-heating system for the intended end-use. The selection and use of any radiant heating system is at the sole discretion and responsibility of the owner/installer.

### **MAINTENANCE AND CLEANING FOR LAMINATE FLOORS**

Do not use a jet spray micro fiber mop, or wet Swiffer’s. Never use wax, polish, abrasive cleaners or scouring agents as they may dull or distort the finish. **USE CAUTION:** Planks are slippery when wet.

For normal everyday cleaning use a broom or a DRY Swiffer’s to sweep up any debris. For hard to clean spots use a lightly damp cloth or mop to clean or you can use a hard surface spray cleaner, just spray a light mist on the floor and then mop with a DRY micro fiber mop. Avoid using excessive moisture. Too much moisture can cause warping, or buckling which is not covered under warranty. All spills should be cleaned up immediately.

Use protective pads under furniture.

It’s a good idea to save a few planks in case of accidental damage. Planks can be replaced or repaired by flooring professional.

**Recommended Spray Cleaner:** FRESH FLOORS by WF Taylor

**Contact your flooring retailer with questions or concerns regarding your flooring purchase.**