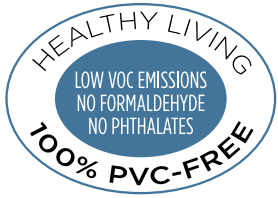


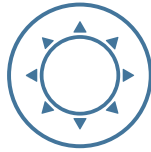
# FEATURES & SPECIFICATIONS

## PVC-FREE CONSTRUCTION

Elandura PVC-free rigid core flooring is crafted using durable food-safe, medical-grade polypropylene—most commonly used to make a variety of consumer products such as baby bottles. The combination of polypropylene and natural minerals results in a product that is waterproof, safe and strong enough to withstand the rigors of daily use in the busiest of households.



WATERPROOF



STAIN & FADE RESISTANT



SUPERIOR AIR QUALITY



FAMILY & PET FRIENDLY



SCRATCH RESISTANT



ATTACHED UNDERLAY

### CERTIFIED SAFE

Elandura contains no PVC, formaldehyde, phthalates, or plasticizers and is GreenGuard Gold and Blue Angel certified.

### WATERPROOF

Elandura's unique composition is waterproof making it ideal for installations throughout your home, including kitchens, bathrooms, or below grade.

### DURABLE PERFORMANCE

Elandura is designed to withstand the challenges of everyday life. It can stand up to spills, scratches and pet accidents, and will not fade or stain.

### EASY INSTALLATION

Quick and simple floating installation with an angle-angle locking system that allows for installations up to 10,000 square feet without the use of transitions.

### LOW MAINTENANCE

Elandura floors are easy to clean. They do not require special or expensive cleaning agents and are safe to clean by wet, damp, and steam mop.

### ATTACHED UNDERLAY

Designed specifically for Elandura, the pre-attached underlay provides built-in acoustical performance. **DELTA IIC 25dB.**

	TILE	PLANK
THICKNESS	<b>4MM+1MM</b>	<b>4MM+1MM</b>
PLANK DIMENSIONS	<b>25.12" x 12.20"</b>	<b>50.79" x 6.81"</b>
SQ. FT. / CARTON	<b>25.55</b>	<b>26.42</b>
LBS. / CARTON	<b>33.90</b>	<b>35.08</b>
UNIQUE PLANKS IN PATTERN	<b>12</b>	<b>18</b>
ABRASION CLASS	<b>AC4</b>	<b>AC4</b>
RESIDENTIAL WARRANTY*	<b>40 YEARS</b>	<b>40 YEARS</b>
COMMERCIAL WARRANTY*	<b>5 YEARS</b>	<b>5 YEARS</b>

\*Refer to warranty documentation for details.

94" COORDINATING MOLDINGS AVAILABLE IN 4 PROFILES:



QUARTER ROUND

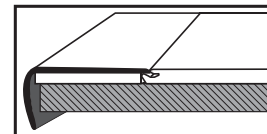
SLIM CAP

SLIM TRIM

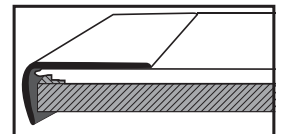
STAIRNOSE

STAIRNOSE CAN BE INSTALLED IN FLUSH OR OVERLAP MANNER

FLUSH



OVERLAP



**Inhaus**<sup>®</sup>  
inhausurfaces.com | 888 255 3412

distributed exclusively by  
**T A S**  
CONTRACT



PRECISION CRAFTED  
IN GERMANY.



[www.blauer-enge.de/en/uz120](http://www.blauer-enge.de/en/uz120)



SILVER SAND 55025

elandura

**PVC-FREE**  
**RIGID CORE FLOORING**  
*MADE IN GERMANY BY* Inhaus®

# PRODUCT RANGE

PLANK FORMAT



**SEASIDE** 55027  
COLOR VARIATION: *LIGHT*



**SILVER SAND** 55025  
COLOR VARIATION: *LIGHT*



**GILMOUR** 55024  
COLOR VARIATION: *LIGHT*



**URBAN** 55026  
COLOR VARIATION: *LIGHT*



**SUTTER** 54954  
COLOR VARIATION: *MEDIUM*



**WOODWIND** 55028  
COLOR VARIATION: *LIGHT*



**TUSCAN**  
55029



**CLOVE** 55030  
COLOR VARIATION: *MEDIUM*



**UMBER** 54957  
COLOR VARIATION: *LIGHT*



**CARAWAY**

COLOR VARIATION:

55031

*MEDIUM*



**TUSCAN**

COLOR VARIATION:

55029

*MEDIUM*



**TERRA**

COLOR VARIATION:

54955

*MEDIUM*

TILE FORMAT \_\_\_\_\_

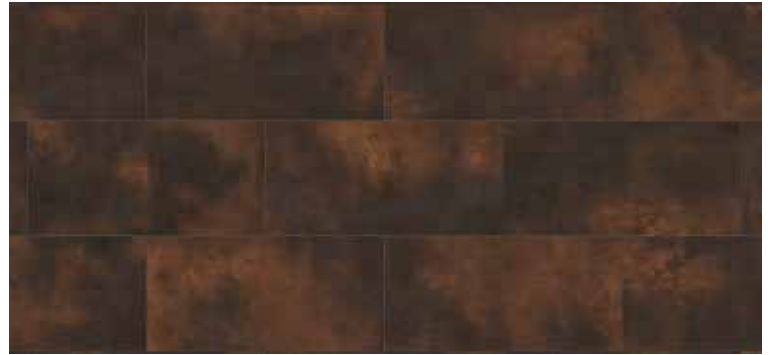


**MIST**

COLOR VARIATION:

54948

*LIGHT*



**HAZELNUT**

COLOR VARIATION:

54956

*MEDIUM*



Color may vary between actual product and printed images. Always make your selection from an actual product sample.