

For additional information please visit inhausurfaces.com or call 1.888.255.3412.



CAUTION:

- Use a dust mask, safety glasses and gloves when cutting Elandura flooring.
- If using power tools to cut planks, always cut in a well-ventilated area.
- Never use tools designed for other flooring installation systems (eg. seam rollers, tap blocks, etc.).
- Do not directly hit or press Elandura with any installation tools such as tap blocks, hammers, mallets or seam rollers as this can cause damage to the product's locking system.
- Never wax, polish or use abrasive cleaners on Elandura floors as they may damage the floor's finish beyond repair.
- Elandura is not recommended in areas where the floor might experience temperature extremes beyond 40°F (-40°C) or greater than 150°F (65°C).

INTENDED USE

Elandura floors are intended for indoor use only and can be installed in any room as long as it does not have in-floor drainage. All Elandura floors have been designed to withstand the requirements of the busiest households as well as limited commercial applications. The occupied use temperature range is assumed to be between 50°F (10°C) and 100°F (38°C). If you are installing Elandura floors in a commercial environment, please refer to the Elandura Approved Placement document and read the warranty documentation specific to your application to determine its suitability.

HANDLING

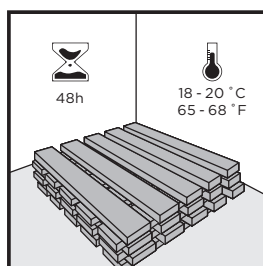
- Handle Elandura with care prior to installation; do not drop cartons, protect edges, etc.
- Always store Elandura cartons flat and properly supported on a level surface.
- Never lean cartons against walls and do not store them on saw-horses or similar equipment that does not fully support the full length of the cartons.

PRE-INSTALLATION

Prior to installing, check all planks for color against samples used in selection to ensure correct product. Further, inspect for defects and transportation damage. Any planks that show damage or defects should not be used.

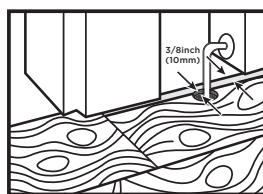
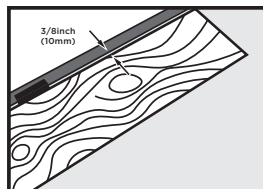
ACCLIMATION

Best practices require 48 hours to acclimate ELANDURA to the conditions of the installation area. To acclimate: cross-stack unopened cartons in the installation area and at room temperature approx. 64°F-73°F (18°C-23°C). Do not install cold or frozen planks.



EXPANSION SPACE

It is necessary to leave a 3/8" (10mm) expansion space around the perimeter of the room and all other objects (e.g. toe kicks, plumbing, etc.). The expansion space will be covered by the wall base or quarter round once the floor is installed. If installing in moisture prone areas, please refer to the Recommendations for Wet Area Installation section of this guide.



TRANSITIONS

It is recommended that transitions (T-Moldings) be used to separate rooms. If using transitions, ensure the required 3/8" (10mm) expansion space is left between Elandura planks and the vertical section of the T-Molding.

MAXIMUM ROOM SIZE

Elandura floors can be installed in a single room up to 100 linear feet (30m) in length and/or 100 linear feet (30m) in width. Installations in rooms that are over 100 linear feet (30m) in length or width must use transitions.

INSTALLATION LAYOUT

There are no rules when it comes to the direction you choose to lay planks in your installation. Typically, Elandura flooring installations are oriented in the following manner: Parallel to the longest wall in the room, or perpendicular to the main window in the room.

CUTTING PLANKS

Elandura flooring planks are designed to be cut using a score and snap method using a standard utility knife. Simply score planks and bend to snap or cut. Always use a straight edge and appropriate safety equipment when scoring and snapping planks. It is important to use good quality, sharp blades in order to minimize damage to the planks. Elandura planks can also be cut with guillotine-type flooring cutters and power saws (e.g. circular saw, table saw, miter saw, jigsaw) as well as hand saws.

NOTE: Elandura planks should always be cut away from the installation area in order to minimize debris and dust in the installation site. Always wear protective equipment such as safety glasses, a NIOSH-approved dust mask and gloves.

TOOLS AND MATERIALS REQUIRED

- Measuring tape
- Pencil or marker
- Carpenter’s square
- Utility knife
- Pull bar
- 2” (51 mm) wide moisture resistant adhesive tape
- Handsaw or door jamb saw
- Saw (any of the following – not required if cutting planks using score and snap method):
 - Guillotine-type cutter
 - Circular saw
 - Table saw
 - Jigsaw
 - Miter saw
- 3/8” (10 mm) spacers
- Safety glasses & dust mask (NIOSH designated)
- Polypropylene appropriate glue if installing in areas where planks cannot be angled (eg. under door jambs)
- 100% flexible neutral curing silicone caulking if installing in moisture prone areas
- PE backer rod if installing in moisture prone areas

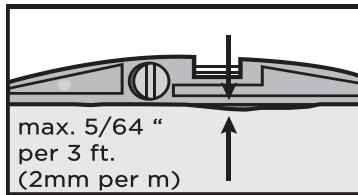
SUBFLOOR PREPARATION

Elandura floors can be installed over many types of subfloors as long as they are properly prepared and meet the required criteria outlined below.

CAUTION: If you contemplate the removal of a resilient floor covering structure that contains (or is presumed to contain) asbestos, you must review and comply with all applicable regulations. Do not sand, dry sweep, dry scrape, drill, saw, bead blast, or mechanically chip or pulverize existing resilient flooring, backing, lining felt, asphalt “cutback” adhesive, or other adhesive. These products may contain asbestos fibers and/or crystalline silica. Avoid creating dust. Inhalation of such dust is a cancer and respiratory tract hazard. Smoking by individuals exposed to asbestos fibers greatly increases the risk of bodily harm. Unless positively certain that the product is a non-asbestos containing material, you must presume it contains asbestos. See “Recommended Work Practices for Removal of Resilient Floor Coverings” (rfci.com) for detailed information and instructions on removing all resilient covering structures.

GENERAL SUBFLOOR PREPARATIONS & PRECAUTIONS

- Subfloors must be clean and free of dirt and debris prior to installation.
- Subfloors must be structurally sound.
- Elandura floors can be installed in bathrooms, kitchens, and entryways by following the (WET AREA RECOMMENDATIONS) section of this guide.
- Variations in the subfloor flatness should not exceed 5/64” per 3 ft (2mm per m). Floors must be leveled to meet this specification prior to installation. Level by filling depressed areas with floor leveling compounds and grinding down any raised areas.
- Abrupt height differences of more than 3/64” per 4 in. (1mm per 10cm) must be corrected (for example, nail heads, concrete ridges and other similar small protrusions).
- Carpet is not a suitable underlay for Elandura floors. All carpet, carpet pad and carpet tack must be removed prior to installation.
- Care must be taken to ensure that the subfloor meets all local building codes and regulations. If installation is below grade or on grade, foundation walls must meet all local building codes and regulations.
- Crawl spaces must meet all local building codes and regulations. Any moisture or risk of moisture existing in your crawl space should be mitigated prior to installing Elandura.



CONCRETE SUBFLOORS

- Concrete subfloors must be properly cured and allowed to dry for at least 60 days prior to installation of Elandura. Always test concrete subfloor for moisture prior to installation. To do so:
- Tape 3’ x 3’ (91cm x 91cm) pieces of polyethylene vapor barrier to subfloor.
 - If condensation appears on the film after 24 hours or concrete appears dark in color, moisture is likely present and a Calcium Chloride test must be performed.

- The maximum allowable moisture emission is 8.0 lbs/1000 ft² per 24 hours (3.91 kg/100 m² per 24 hours) ASTM F1869. Alternatively, a Tramex test can be performed in accordance with ASTM F2659. However, recorded values higher than 4.5% require a Calcium Chloride test to verify that the subfloor moisture is appropriate. In Situ probe testing can also be used according to ASTM F2170 and the reading should not exceed 85%.
- A minimum 6 mil (0.2mm) polyethylene vapor barrier must be used when installing over concrete.
 - Overlap vapor barrier edges by 8” (20cm) and seal with moisture resistant adhesive tape.
 - Run vapor barrier 3/4” (2cm) up wall and install wall base trim over it.

NOTE: Moisture will not affect Elandura, but moisture should be mitigated in interior environments whenever possible.

SUBFLOOR PREPARATION CONTINUED

WOOD SUBFLOORS

- Wood subfloors must be structurally sound and screwed or nailed to supporting beams.
- Subfloor moisture must be tested prior to installation and should not exceed 12% throughout the installation area.
- Do not install Elandura floors over wood subfloors applied directly to concrete.

VINYL (SHEET/TILE), LINOLEUM, CERAMIC TILE

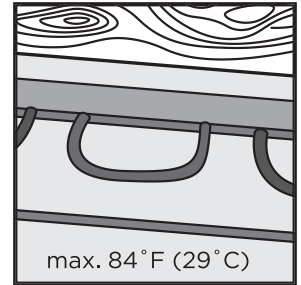
- Existing floor covering must be in good condition with no tears, cracks or chips.
- Floor covering should be well bonded to the subfloor and the surface should be flat, smooth and level to 5/64" per 3 ft (2mm per m).
- Heavily cushioned floor covering (eg. cushion vinyl) and resilient floors that exceed one layer in thickness should be removed. Follow manufacturer's guidelines when uninstalling resilient floor coverings. Wear personal protection equipment (dust mask, gloves, glasses, etc.).
- If installing over ceramic tile, any abrupt unevenness of more than 3/64" per 4 in. (1mm per 10cm) must be corrected.

- If vinyl, linoleum, or ceramic tile is installed over concrete, a 6 mil (0.2mm) vapor barrier must be installed over it.
- Overlap vapor barrier edges by 8" (20cm) and seal with moisture resistant adhesive tape.
- Run vapor barrier 3/4" (2cm) up wall and install wall base trim over it.

INSTALLATIONS OVER RADIANT HEATING SYSTEMS

ELANDURA can be installed over in-floor heating systems, but floor temperature should never exceed 84° F (29° C).

- In-floor heat systems must be operating for a minimum of 3 weeks prior to installation of Elandura floors.
- Follow procedures as outlined in the Concrete Subfloors section of this guide.
- Do not install Elandura directly over electric wires or mats.



ROOM PREPARATION

WALL BASE /TRIM

- Removal of existing wall base/trim is optional. If you decide not to remove your wall base then you will have to install quarter-round moldings after installation of your Elandura floor is complete.
- Wall base or trim will need to be installed once the flooring installation is complete to cover the expansion space around the perimeter of the room.
- Always nail/adhere wall base and trim to the wall. Never nail/adhere it to the flooring.

WALL IRREGULARITIES

Walls are not always perfectly straight. Elandura floors will need to be cut so as to fit within irregularities of your walls. To do so:

1. Install a complete first row of Elandura floors (following the Installation Procedures below) and ensure that all long edges of the Elandura flooring are aligned flush with one other.
2. Slide the whole row against the wall; you will now notice any wall irregularities (i.e. areas where the wall is not straight).
3. Trace the contour of the wall onto the row of Elandura flooring with a pencil or marker. Once traced, uninstall the planks carefully so as to not damage the locking system and cut along the traced line (see Plank Removal section below).
4. Re-install the planks leaving the necessary 3/8" (10mm) expansion space between them and your wall.

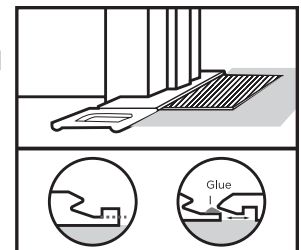
CABINETS & ISLANDS

- Always install cabinets and islands prior to installing Elandura floors.
- If cabinets need to be installed after Elandura is installed they should be mounted to the wall and in a manner that does not pin Elandura and prevent it from performing as a floating floor.

DOORS & DOOR JAMBS

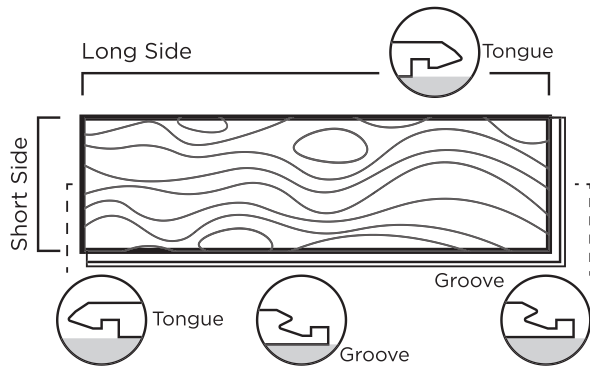
Elandura floors should be installed under door jambs. As such door jambs will need to be undercut accordingly. To do so:

- Use a Elandura flooring off-cut to support your saw blade at the correct height for undercutting.
- Check door clearances and make any necessary height adjustments before installing Elandura floors.
- Make sure to leave the 3/8" (10mm) expansion spacing from the wall under the door jamb.



TIP: If possible, it is often easiest to start at the door of the room so that the first plank can be easily slid under the door jamb.

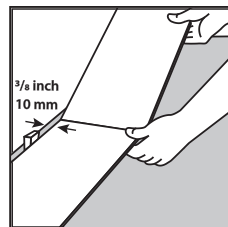
- In some cases you may have to modify a plank's locking system as a door jamb may prevent you from angling it into place. To do so, safely remove the vertical section of the groove. This will allow you to slide planks together horizontally. Apply a small amount of adhesive suitable for gluing polypropylene into the plank's groove and slide the plank into place.



- It is recommended that planks be mixed from at least three cartons to achieve the most natural and varied appearance. There are 21 unique planks in every Elandura design. However, during production, the same plank may be inserted into one carton multiple times. It is important to mix planks from multiple cartons and review the installation often to ensure the most random appearance.
- Inspect every plank for damage and visual defects before installing it. DO NOT INSTALL damaged or defective planks.
- Never force planks together using excessive force. If planks are not fitting together easily check joint alignment and inspect for debris in the joints.
- The first and last row of the installation should be wider than 4" (10cm). To ensure this will be the case, prior to installation:
 1. Measure the width of the room and divide it by the width of the planks you are installing.
 2. If the remainder is less than 4" (10cm) cut 4" (10cm) from the width of the first row. If this is not possible, simply ensure that both edge planks are as even in width as possible.
- The first and last plank in a row should be a minimum of 16" (40cm) long.
- Stagger the planks from row to row by a minimum of 16" (40cm).
- Prepare the subfloor and room as per the corresponding instructions found in this guide.
- Use spacers to maintain the 3/8" (10mm) expansion space between the first row and the wall.
- Select a starting corner of the room and work from left to right.

INSTALLING THE FIRST ROW

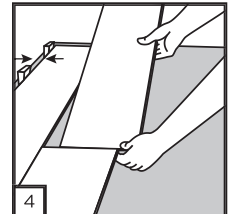
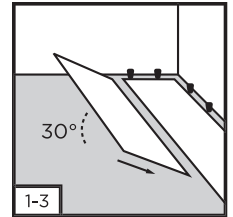
1. Lay the first plank with the long edge tongue facing the wall.
2. Lift the right side of the second plank to a 30 degree angle and place its short end tongue into the short end groove of the first plank.
3. Slowly lower the plank to lock the two together.
4. Continue in this manner until the first row is complete, cutting the last plank to complete the row.
5. Use the remainder of the last plank of the first row to



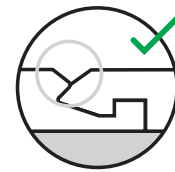
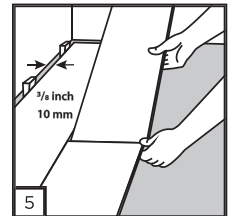
start the second row provided that it is a minimum of 16" (40cm) long.

ALL OTHER ROWS

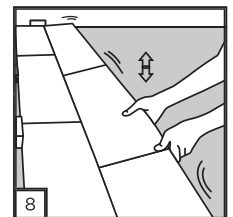
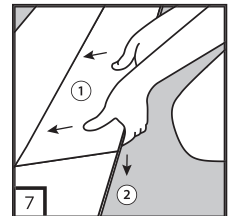
1. To install the first plank of the second row, place its long edge tongue into the previous row's long edge groove.
2. Lift the long edge groove side only to approximately a 30° angle so the edge you're holding is lifted off the floor, but the opposing long edge is resting in the previous row's groove.
3. Lower the plank to lock it into the previous row (a slight up/down, oscillating movement together with some force in the direction of the previous row may help to lower the plank).



TIP: Inspect the width of the long side bevel for uniformity. If the bevel is not even on both sides the connection is not correct.



4. Install the second plank of the second row by installing its short edge to the previous row's groove.
5. Hold a plank at approximately a 30 degree angle and connect short end joints together about half-way down the width of the short edge. Before lowering the right edge of the plank, slide it forward towards the previous row.
6. Lower the right side of the plank so that its long edge tongue is sitting in the previous row's groove. The short end seam is now engaged.
7. Lift the long edge of the plank you're installing 2 in. to 3 in. off the ground (this may lift the previously installed planks in the row as well) and apply forward pressure close to the connected short end so as to slide the long edge tongue into the previous row's groove.



NOTE: Planks are designed to interlock easily and with a small amount of pressure; if this is not the case, inspect the connection system for damage or debris.

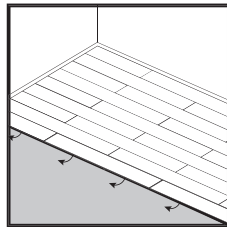
8. Lower the planks to connect the long edge (you may need to slowly oscillate the planks up and down slightly for them to engage).
9. Continue in this manner until your installation is complete.
10. Remove all spacers.

INSTALLATION PROCEDURES

11. Install quarter rounds, base boards and all other moldings.
12. Clean the floor and inspect it to ensure all joints are locked in place.

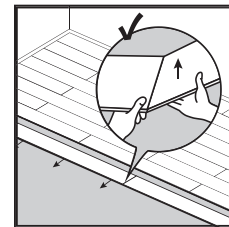
PLANK REMOVAL

- To remove planks, lift the long edge of the last installed row all at once to approximately 30 degrees in order to disengage the long edge installation mechanism.
- Once this row has been removed, disconnect each individual plank



from one another by starting at the right-most plank and lifting its right end to a 30 degree angle to disengage it from the previous plank.

- If you plan to re-install them, care should be taken so as not to damage the installation mechanism.



RECOMMENDATIONS FOR WET AREA INSTALLATION

When installing in moisture prone areas (eg. kitchens, bathrooms, entryways), seal all expansion spaces with compressible PE foam backer rod and 100% neutral cure flexible silicone caulk as described in the following procedure.

NOTE: Elandura is not a water barrier. When excessive moisture accumulates in buildings or on building materials, mold and/or mildew growth can occur. Care should be taken to address any moisture related issues prior to installing Elandura.

NOTE: Do not use acrylic based caulks as they are rigid and will prevent the floor from expanding and contracting. Use only neutral curing 100% flexible silicone caulk. Do not use acetoxy silicone caulks as they may damage Elandura.

PROCEDURE:

1. Insert 1/2" (12mm) compressible PE foam backer rod into room perimeter expansion space and cover completely with flexible silicone caulk.
2. Insert 3/8" (10mm) compressible PE foam backer rod at transitions and cover completely with flexible silicone caulk.
3. Use 100% flexible neutral cure silicone caulking around door frames and other fixed objects (eg. plumbing).
4. Install baseboards, quarter-rounds or other applicable moldings and immediately wipe up excess caulk.
5. Ensure baseboards or quarter-rounds are attached to walls, not floors.

