

iD Latitude™ Woods

LUXURY VINYL TILE + PLANK



where design & performance intersect

 **Tarkett**



ready for wherever the road leads

iD Latitude brings the full trifecta: great design, lasting performance and practical affordability. Our latest updates to the collection offer forward-looking wood, stone and abstract patterns that support your vision for every space. With quick installation, immediate occupancy and top-of-class Tectonic® protection, these 72 hard-working designs are ready to support every step of your next project.

Because the collection is so expansive, we've divided iD Latitude Woods, Stones and Abstracts into three separate volumes.



LACEWOOD PLWD 7532 | UNIDIRECTIONAL 6"X48"



PLWD 7532
LACEWOOD



PLWD 7538
AUTUMN WALNUT



PLWD 7536
BUTTERNUT



PLWD 7524
NATURAL TEAK



PLWD 7537
ENGLISH WALNUT



PLWD 3401
BLACK WALNUT



PLWD 7523
SUNTONED TEAK



PLWD 7535
SILVER MAPLE



PLWD 5134
BLANCHED PINE



PLWD 5136
ACADIA PINE



PLWD 3530
VINTAGE OAK



PLWD 7534
MOUNTAIN MAPLE



PLWD 3603
URBAN OAK



PLWD 7539
GOLDEN OAK



PLWD 7541
PARABLE



PLWD 7542
HAZELWOOD



PLWD 7540
MILLENNIUM OAK



GENEVA PLWD 7530 | UNIDIRECTIONAL 6"X48"



PLWD 3522
CRÈME OAK



PLWD 3523
LAUREL OAK



PLWD 7530
GENEVA



PLWD 3606
CHAMOIS OAK



PLCG 7514
GILBRALTER



PLWD 7531
CHANDLER OAK



TAOS OAK
PLWD 3605



PLWD 7526
PEARL MAPLE



PLWD 3305
AMERICAN CHERRY



PLWD 7533
NORDIC



PLWD 3405
HICKORY



PLWD 3308
ASH



PLWD 3307
EUROPEAN CHERRY

iD Latitude | Woods

Nothing adds visual warmth to a space like the look of natural wood grain. This broad selection of 30 wood visuals gives you complete design flexibility, from cool to warm tones, light to dark looks, and a variety of grain patterns.



PLWD 3523
LAUREL OAK



PLWD 7539
GOLDEN OAK



PLWD 7526
PEARL MAPLE



PLWD 7533
NORDIC



PLWD 3522
CRÈME OAK



PLWD 7532
LACEWOOD



PLWD 3606
CHAMOIS OAK



PLWD 5134
BLANCHED PINE



PLWD 3305
AMERICAN CHERRY



PLWD 3308
ASH



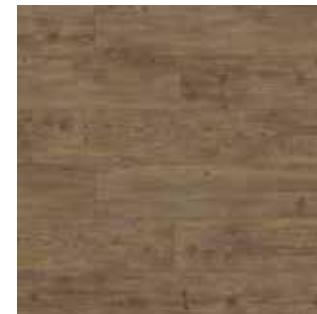
PLWD 7537
ENGLISH WALNUT



PLWD 7541
PARABLE



PLWD 7536
BUTTERNUT



PLWD 5136
ACADIA PINE



PLWD 7535
SILVER MAPLE



PLWD 3605
TAOS OAK



PLWD 7524
NATURAL TEAK



PLWD 3307
EUROPEAN CHERRY



PLWD 3405
HICKORY



PLWD 7538
AUTUMN WALNUT



PLWD 3530
VINTAGE OAK



PLWD 7530
GENEVA



PLCG 7514
GILBRALTER



PLWD 7523
SUNTONED TEAK



PLWD 3401
BLACK WALNUT



PLWD 7534
MOUNTAIN MAPLE



PLWD 7542
HAZELWOOD



PLWD 7531
CHANDLER OAK



PLWD 7540
MILLENNIUM OAK



PLWD 3603
URBAN OAK

iD Latitude | Stones

Featuring a variety of linear, concrete and terrazzo looks, iD Latitude Stones blend contemporary design with the timeless aesthetic of natural materials. Even better than the real thing, these designs are stain-resistant and improve acoustics to remain beautiful and comfortable for years to come.



PLST 7235
CRISTALLO



PLCN 3515
ALUMIN



PLST 7501
ELBRUS



PLST 7544
LUNAR ROCK



PLST 7244
PRAIRIE



PLST 7547
CHATEAU



PLST 7548
IRON PATINA



PLST 7543
LAVA STONE



PLST 7214
LUNA



PLCN 3511
GYPSUM



PLST 7242
HEARTHSTONE



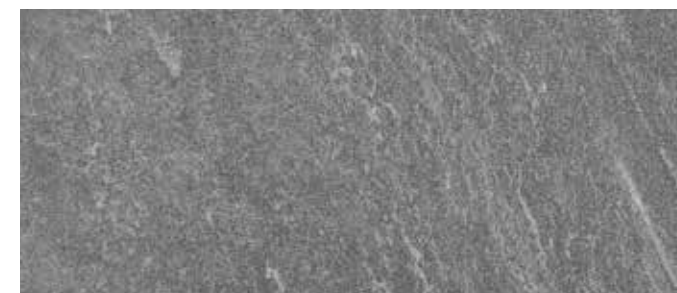
PLST 7550
GEMSTONE



PLST 7549
WEATHERED GLAZE



PLST 7546
EVENING SHADOW



PLST 7545
ARCTIC SKY



PLCN 3519
CHARCOAL

iD Latitude | Abstracts

This broad palette of artful designs includes a variety of solutions for every segment—from soft, soothing neutrals to bold, saturated hues. You can mix and match iD Latitude Abstracts with wood and stone looks to add visual interest or helpful wayfinding.



PLCZ 7569
ZINNIA



PLCZ 7557
AFTERGLOW



PLCZ 7556
COASTLINE



PLCZ 7567
GULFSTREAM



PLCZ 7563
VILLA WHITE



PLCZ 7565
LANDMARK



PLCZ 7560
OVERCAST



PLCZ 7562
WINDFRESH



PLCZ 7558
SUNSET



PLCZ 7568
PARADISE



PLCZ 7554
WATERMIST



PLCZ 7553
ROYALE



PLCZ 7564
BARLEY



PLCZ 7566
HARBOR



PLCZ 7561
VAPOR



PLSM 5102
NIMBUS



PLCZ 7559
STAR CROSSED



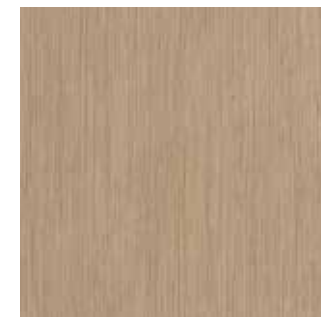
PLCZ 7555
KINGSTON



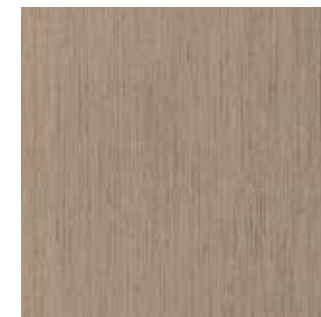
PLCZ 7551
PALACE



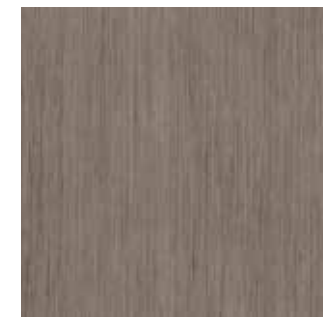
PLCZ 7552
NIGHTFALL



PLFL 5101
BISQUE



PLFL 5103
GREIGE



PLFL 5110
TAUPE



PLTG 3542
COOL BEIGE



PLCZ 7570
BLOSSOM



PLTG 3545
CHARCOAL

Tarkett Solution SPECtrum™

Design more brilliantly.

At Tarkett, we believe in placing people in the center of every space. So we've developed a portfolio of products designed to work together both functionally and aesthetically, helping you create more supportive spaces that maximize return on investment. Our full palette of colors, patterns, and textures is coordinated to work together visually across product categories — creating the perfect balance for people, planet, and performance.

The BrillianceSM Digital Color System puts the entire TARKETT SOLUTION SPECtrum portfolio at your fingertips — no matter where you happen to be working. Within one digital tool, you can save favorite surfaces to project boards, visualize them in a space, and order samples. By getting the right color match every time, the tool reduces sample waste and shipping, helping us all design more responsibly and reduce our carbon footprints. Speak to your Tarkett sales representative to get started, or visit brilliance.tarkett.com.



Johnsonite Millwork Wall Base
Diplomat 293 Peacock



Johnsonite Millwork Wall Base
Inflection 292 Vaporize



Johnsonite Millwork Wall Base
Silhouette 31 Zephyr



Johnsonite IQ Eminent
Dusty Sand 0928

Color may vary from actual swatch. To order a sample and to learn more, please visit tarkett.com.



iD Latitude Wood LVT
Butternut PLWD 7536



iD Latitude Stone LVT
Iron Patina PLST 7548



iD Latitude Abstract LVT
Watermist PLCZ 7554



iD Latitude Abstract LVT
Villa White PLCZ 7563



iD Latitude Abstract LVT
Coastline PLCZ 7556



iD Latitude Wood LVT
Autumn Walnut PLWD 7538



iD Latitude Wood LVT
Lacewood PLWD 7532



iD Latitude Stone LVT
Chateau PLST 7547



Soft Surface Powerbond | Modular Tile
Tundra Flower 11663 Sea Gem 52606



Soft Surface Powerbond | Modular Tile
Earthbound 11573 Streamside 65402

Tarkett Techtonic® delivers unequalled resistance to scratches, abrasions and scuffs.

Every flooring product has a coating, but only Tarkett has Techtonic: a groundbreaking solution that strengthens the durability of LVT, giving you better performance for the price. By mixing rugged protection with a beautiful matte finish, Techtonic keeps your floors' surfaces looking better and lasting longer.



Resists scratches 40% better.

So you'll never have to choose between replacing a new floor, or living with the damage. Just one exposed nail in the foot of a chair can scratch a new floor and produce whitening. In a series of laboratory experiments utilizing a diamond-tipped Taber Scratch tool, Techtonic performed significantly better than the industry market leader—withstanding greater pressure without scratching or scratch whitening.



18% more protection against abrasions.

Now you can move furniture with more freedom— and less concern. Surface sheen is worn away by repetitive actions in high-traffic areas, such as the movement of chairs and tables. By protecting surfaces, Techtonic preserves not just their sheen, but your peace of mind.



Best-in-class scuff resistance.

Spend less time cleaning black marks (and more years enjoying spotless surfaces). Those black marks from dragging shoes and chair casters? They're scuff marks caused by friction. No product on the market fights them better than Techtonic — a solution that keeps your floors performing better, year after year.



Immaculate stain defense.

Momentary mishaps shouldn't have permanent effects. Techtonic's polyurethane coating provides an advanced level of security against stains, reducing the chances of damaged flooring (and expensive cleaning).

CERTIFIED **asthma & allergy friendly**®

More than 25 million people in the U.S. have asthma, and it's been named a leading chronic disease among children, causing nearly 1 million missed school days each year. At Tarkett, we believe everyone deserves healthy spaces where they can learn, work and play. Guided by Tarkett Human-Conscious Design®, we're designing flooring surfaces that are safe, comfortable and productive for diverse needs and populations. That's why Tarkett North America became the first flooring manufacturer to offer **CERTIFIED asthma & allergy friendly**® surfaces for both residential and commercial use.

The **asthma & allergy friendly**® certification from Allergy Standards Ltd. (ASL), operated in cooperation with the Asthma and Allergy Foundation of America (AAFA), identifies products that are proven to reduce exposure to allergens and asthma triggers—taking into account total installation (product and adhesive) and its ability to be easily cleaned without harsh chemicals.

As a regulated, physician-led certification, this mark is awarded exclusively to products that have met strict testing standards developed by healthcare experts to ensure:

- Allergens are easily removed from the surface of the flooring
- Airborne allergen levels remain low while cleaning
- Volatile organic compound (VOC) emissions remain low after installation





Proof in Every StepSM

For years, Tarkett has raised the sustainability standards of our industry. We took the first steps and are determined to stay a step ahead.

And while inspirational words are great, we know impact is in the numbers — numbers subjected to intense third-party scrutiny. So, at Tarkett we don't just say it, **we prove it.**

These three values help us stay the course when it comes to sustainability.

 <h3>Setting New Transparency Standards</h3> <p>What you begin with affects everything that comes after it. That's why we subject our products to relentless scientific scrutiny and third-party testing and offer radical transparency about our materials and operations</p>	 <h3>Empowering the Next Step in the Value Chain</h3> <p>We make our business partners and customers more inherently sustainable with products and practices that consider every step in the value chain.</p>	 <h3>Creating Healthier Futures</h3> <p>We base all our sustainability initiatives on our commitment to create healthier environments indoors and out, today and for generations to come.</p>
---	--	--

Sustainability Highlights

Feel confident in the numbers



A holistic approach you can count on...

97%

of our raw materials are third-party assessed for their impact on human and environmental health based on Cradle to Cradle criteria.

70%

of raw materials are abundant, rapidly renewable or recycled.

14

zero-waste to landfill manufacturing plants.



...And certifications you can trust.

2011

started working with EPEA to integrate Cradle to Cradle principles into every facet of our business.

2013

first commercial flooring **CERTIFIED asthma and allergy friendly**®.

We've been guided by third party certifications for years, showing health and wellness can and do go hand-in-hand with sustainability.



We're leaders in radical transparency.

100

ppm

raw materials content revealed down to 100 parts per million.

When most manufacturers reveal raw materials content down to just 1,000 ppm, there's simply no contest.

We've been providing Material Health Statements since 2013 to give you peace of mind about the content of our products.



Setting tomorrow's standards...

99%

of flooring solutions have low VOC emission levels — 10x lower than the most stringent world standards

100%

orthophthalate-free vinyl production. First company to eliminate orthophthalates from all products.



...For globally recognized excellence.

2010

first flooring manufacturer to join the UN Global Compact.

2021

awarded the Gold medal by EcoVadis; now ranked among the top 2% of companies in our industry rated by EcoVadis.

2021

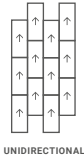
scored B, the CDP management level, regarding the climate change performance assessment.

At Tarkett, social and environmental responsibility aren't add-ons. They're woven, stamped and sealed into everything we do. **But more importantly, we don't just say this, we prove it.**

Specifications.

+ TECTONIC®

Style Name/Number:	iD Latitude Wood
Classification:	ASTM F1700, Class III, Type B
Warranty:	25 years
Tile Sizes:	6" x 48"
Sample Sizes:	6" x 6", 6" x 48"
Carton Size:	6" x 48"
Quantity:	18 planks per ctn, 36 sq. ft. per ctn
Weight:	36 Lbs per Ctn, 72 Ctns per Pallet
Total Thickness:	0.120" (3mm)
Wear Layer Thickness:	20 mil
Finish:	Tectonic
Edge Treatment:	Square
Emboss:	Standard Emboss
Colors Available:	30
Installation Method:	Glue-down
Installation Options:	6x48: Unidirectional, Herringbone



UNIDIRECTIONAL



HERRINGBONE

Testing		
Static Load:	ASTM F970	250 psi, ≤0.005 inches
Residual Indentation:	ASTM F1914	Passes
Slip Resistance:	ASTM D2047	≥0.5 SCOF
Flammability:	ASTM E6 48	≥450
Smoke Density:	ASTM E6 62	Passes
Chemical Resistance:	ASTM F925	ΔE≤8
Resistance to Light:	ASTM F1515	ΔE≤8
Resistance to Heat:	ASTM F1514	Passes
Dimensional Stability:	ASTM F2199	Passes
Flexibility:	ASTM F137	

Construction option.

LVT Product	Recycled Content*		Ortho-Phthalate-free	FloorScore Certified
	Overall	Post-Consumer		
iD Latitude	45%		Yes	Yes

Adhesives for LVT products.

A brief comparison of adhesive products recommended for use with Tarkett LVT, in multiple installation scenarios.

Adhesive	Moisture RH
RollSmart™	95% Allows immediate occupancy
959 Vinyl Tile and Plank Adhesive	90%
975 Two-Part Urethane Adhesive	90% For install with heavy point loads, topical moisture, and extreme temperature variation
959 High Moisture Subfloor Adhesive	99% New concrete
	95% 2+ Year-old concrete

Sustainability attributes.

LUXURY VINYL TILE

Healthy Materials:

Ortho-phthalate-free; 97% raw materials third-party assessed

Indoor Air Quality:

FloorScore® certified; meets CDPH standard method v1.2-2017 CERTIFIED asthma & allergy friendly®

Transparency Certifications by Third-Party:

Industry-wide EPD

Responsible End-of-Use Management:

Part of Tarkett ReStart program

ENVIRONMENTAL INFO: Please visit tarkett.com for environmental information on all Tarkett products.

Transparency.

Access to Transparency Documents:

Transparency certifications and product details are located on the Tarkett website, ecomedes.com and mindful MATERIALS. Visit us on Ecomedes (tarkett.ecomedes.com) to find product certification documentation to support green building systems and federal standards.



On the cover:

ID LATITUDE LVT
GIBRALTER PLCG 7514
WATERMIST PLCZ 7554
GEMSTONE PLST 7550



For more accurate color and pattern representation, we suggest you visit an authorized Tarkett dealer to view an actual product sample. All third-party trademarks are the property of their respective owners.