



BEYOND RETRO COLLECTION

INSPIRED BY THE PAST, DESIGNED FOR THE FUTURE

DISTRIBUTED BY
TAS
CONTRACT



Beyond Retro Design Process



Vintage Kährs Display

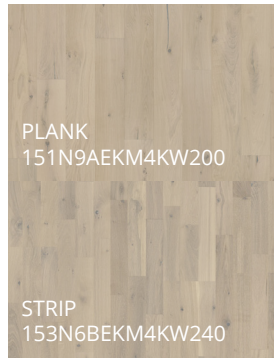


Sample Archives in Nybro, Sweden

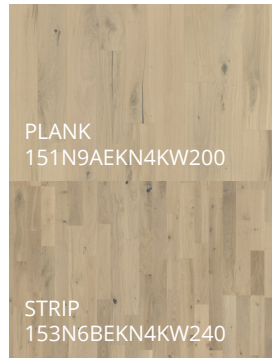
CELEBRATING THE 80 YEAR ANNIVERSARY OF ENGINEERED FLOORING

Eighty years ago, Kährs introduced the first engineered floor. Today, the Beyond Retro Collection celebrates Kährs' illustrious history by reinventing floors from Kährs' wood sample archives, resulting in a unique collection of six silky, soft, muted colors. The earthy color palette of Beyond Retro brings a sense of nostalgia combined with a classic modern touch.

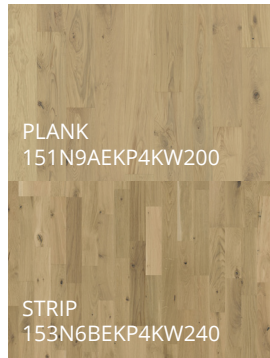
LOFT WHITE



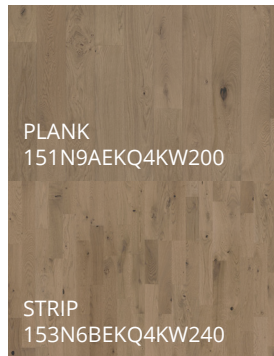
FROSTED OAT



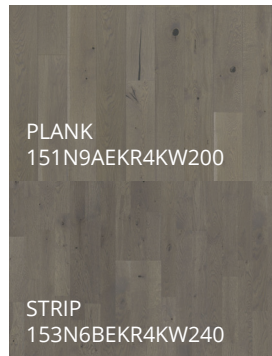
URBAN BROWN



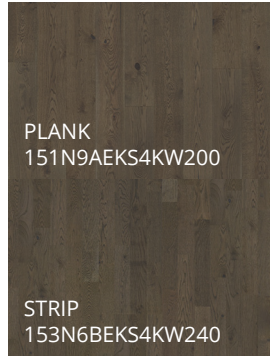
FROZEN HAZELNUT



PEARL GREY



CHARCOAL LIGHT



Features	All: Oak, Brushed, Stained Strip: Straight Edge Plank: 4-Sided Microbevel
Surface Treatment	Ultra Matte Finish
Grading	Plank: Dynamic Strip: Lively
Joint	Woodloc® 5S
Guarantee	Lifetime Structural 25 Year Wear Through
Installation	Float, Glue, Nail
Dimensions	Plank: 78 3/4" x 7 3/8" x 5/8" Strip: 95 3/8" x 7 7/8" x 5/8"
Wear Layer	Approx. 3.5mm
Boards/Ctn	6
Area	Plank: 24.111 ft ² Strip: 31.324 ft ²
Weight	Plank: 40 lbs Strip: 54 lbs
Ctn/Pallet	Plank: 45 Strip: 50
Pallets/Cont.	16

This product may be floated over radiant heat.



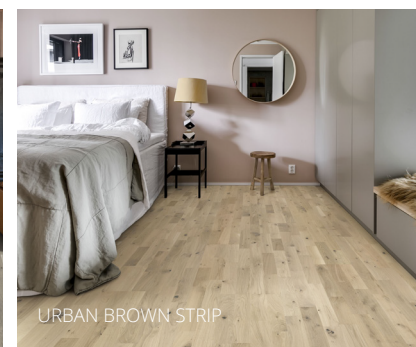
LOFT WHITE PLANK



URBAN BROWN STRIP



PEARL GREY PLANK



URBAN BROWN STRIP